



METALWARE

## BOLTLESS SHELVING UNITS

- Adjustable shelving system that provides high strength, yet economical storage capacity for your needs
- This system uses an innovative shelf clip, which slips into a slotted "T" post and is immediate ready to receive a shelf
- No-Bolt design reduces up to 80% of installation time
- Colour: Grey
- Ships knocked down

RN328  
Dividers



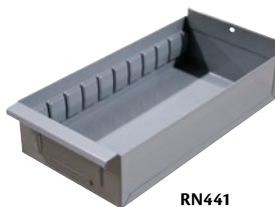
RL757  
Hanging Bar  
Bracket



RN307  
Bin Front



RN441  
Shelf Boxes



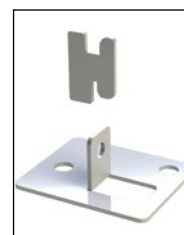
RN340  
Gusset



RN464  
48" Hanger Bar



FM036  
Foot Plate



## INTERLOK BOLTLESS SHELVING DIVIDER

- Separate shelves into bin compartments
- Constructed of 20 gauge steel

Model No.	Dimensions			Wt. lbs	Price /Each
	D"	x	H"		
RN328	12	x	6	0.5	
RN329	15	x	6	0.75	
RN330	18	x	6	1	
RN331	24	x	6	1.5	
RN332	12	x	8	0.75	
RN333	15	x	8	1	
RN334	18	x	8	1.5	
RN335	24	x	8	2	
RN313	12	x	10	1	
RN314	15	x	10	1.25	
RN315	18	x	10	1.75	
RN316	24	x	10	2.25	
RN317	12	x	12	1.25	
RN318	15	x	12	1.75	
RN319	18	x	12	2	
RN320	24	x	12	2.75	
RN321	12	x	14	1.5	
RN322	15	x	14	2	
RN323	18	x	14	2.25	
RN324	24	x	14	3.25	
RN325	18	x	16	2.5	
RN326	18	x	18	2.75	

## INTERLOK BOLTLESS SHELVING SHELF BOX

- Slide onto properly spaced shelving
- Extends 100% without spills
- Constructed of 20 gauge steel

Model No.	Dimensions				Wt. lbs	Price /Each
	W"	x	D"	x H"		
RN441	5 5/8	x	12	x 2 3/4	2.5	
RN443	5 5/8	x	18	x 2 3/4	3.5	
RN447	5 5/8	x	12	x 4 3/4	3.5	
RN448	5 5/8	x	15	x 4 3/4	4	
RN462	5 5/8	x	18	x 4 3/4	4.5	
RN445	11	x	18	x 4 3/4	5	
RN444	12	x	12	x 4 3/4	5.5	

## MISCELLANEOUS

Model No.	Description	Wt. lbs	Price /Each
FM036	Interlok Boltless Shelving Foot Plate	0.3	
RN340	Interlok Boltless Shelving Gussets	1	
RN464*	Interlok Boltless Shelving Hanging Bar	3.5	
RL757	Interlok Boltless Shelving Hanging Bar Bracket	0.05	
RC515	Interlok Boltless Shelving Shelf Clip	0.01	
RN306	Interlok Boltless Shelving Back-to-Back Brackets	0.01	
RC383	Interlok Boltless Shelving Back Panel Brackets	-	

\*Requires two brackets (RL757)

## INTERLOK BOLTLESS SHELVING BIN FRONT/BASE PLATE

- Used in conjunction with bin dividers

Model No.	Dimensions			Wt. lbs	Price /Each
	W"	x	H"		
RN307	36	x	1	1.75	
RN309	36	x	2	2	
RN311	36	x	3	2.25	
RN308	42	x	1	2	
RN310	42	x	2	2.25	
RN312	42	x	3	2.5	