
Instruction Manual
MJ524
Mobile Hydraulic Scissor Lift Table
2200 lbs. (1000 kg)



KLETON

WARNING!

Read this operation manual carefully and understand fully the operating instructions. Improper use of this unit could result in injury.

- DO NOT put foot or hand in scissor mechanism.
- Keep neighbouring persons away from the unit when in use.
- DO NOT stand in front or behind of lift table when it is in use.
- DO NOT crawl under the table.
- DO NOT put foot in front of rolling wheels.
- DO NOT use lift table on slope or inclined surfaces.
- DO NOT lift or ride people on this unit.

CAUTION!

- DO NOT move this unit when lifting or lowering the bed or when the bed is in an elevated position. (Bed must be lowered when the unit is running)
- DO NOT use this table for any purpose other than it's intended use and do not load with more than the rated capacity.
- DO NOT allow persons to operate this table without complete understanding of its operation.
- DO NOT lower the bed too quickly.
- During loading/unloading operation, do not release the parking brake.
- Load should be distributed on at least 80% of the table area. Stop operation of lift table if load becomes too unstable, do not place objects protruding off edge of the bed.
- DO NOT modify lift table without manufacturers written consent.

Daily Inspection

Daily inspection of this unit is critical in order to locate any malfunction or fault. Check the following daily before operating your lift table.

1. Check for bending or cracking of the lift table.
2. Check for any oil leakage from the cylinder.
3. Check for vertical creep of the table.
4. Check for smooth movement of the wheels.
5. Ensure that brakes are fully functional.
6. Ensure that all nuts and bolts are firmly tightened.

Assembly method

The lift table is packed in a cardboard box. Assembling of the jack up pedal is required.

WARNING: Assembly work must be done on a flat surface; wheels must be chocked to prevent accidental rolling of the unit.

1. Insert the jack pedal into the pedal pipe and position the tapered side pedal end to right. Tighten the jack pedal using the removed nut and washer with the smallest hex key supplied in the box.
-

OPERATING THE LIFT TABLE

How to use the brake

The brake is located next to the swivel caster on right hand side.

1. To brake the lift table, press the brake pedal.
2. To release the brake, lift up the brake pedal.

CAUTION: Put lift table in brake mode when stationary in order to prevent sudden movement.

Lifting the Table

To lift the table, press the lifting pedal several times until the table reaches the desired height. The table lowers slightly after reaching the highest position. Maximum Capacity of this table is 2200 lbs. (1000 kg).

WARNING: Do not overload lift table, stay within the rated capacity.

Do not load the table on sides or ends only. Load must be distributed on at least 80% of table area.

Lowering the Table

WARNING: DO NOT put foot or hand in scissor mechanism. The rotating knob lowers the table.

NOTE: The hydraulic cylinder is designed to hold table. As is the nature of the hydraulic system, table lowers very slowly over an extended period of time. Please note that the table does not stay at the same height indefinitely.

Specifications

Model	Capacity	Table	Table Height	Foot Pedal Strokes to Elevate	Wheel	Weight
MJ524	1000 kg. 2200 lbs.	1016 x 510 mm 40" x 20.1"	380-990 mm 15" x 39"	82	128 mm 5"	122 kg. 269 lbs.

Service Instructions

Change hydraulic oil every 12 months

Lubricate the following areas every month: Fitting of Cylinder/oil, Roller Friction Surface/grease, Link Pin/oil, Pedal Fitting Point/oil, Grease Nipple/grease

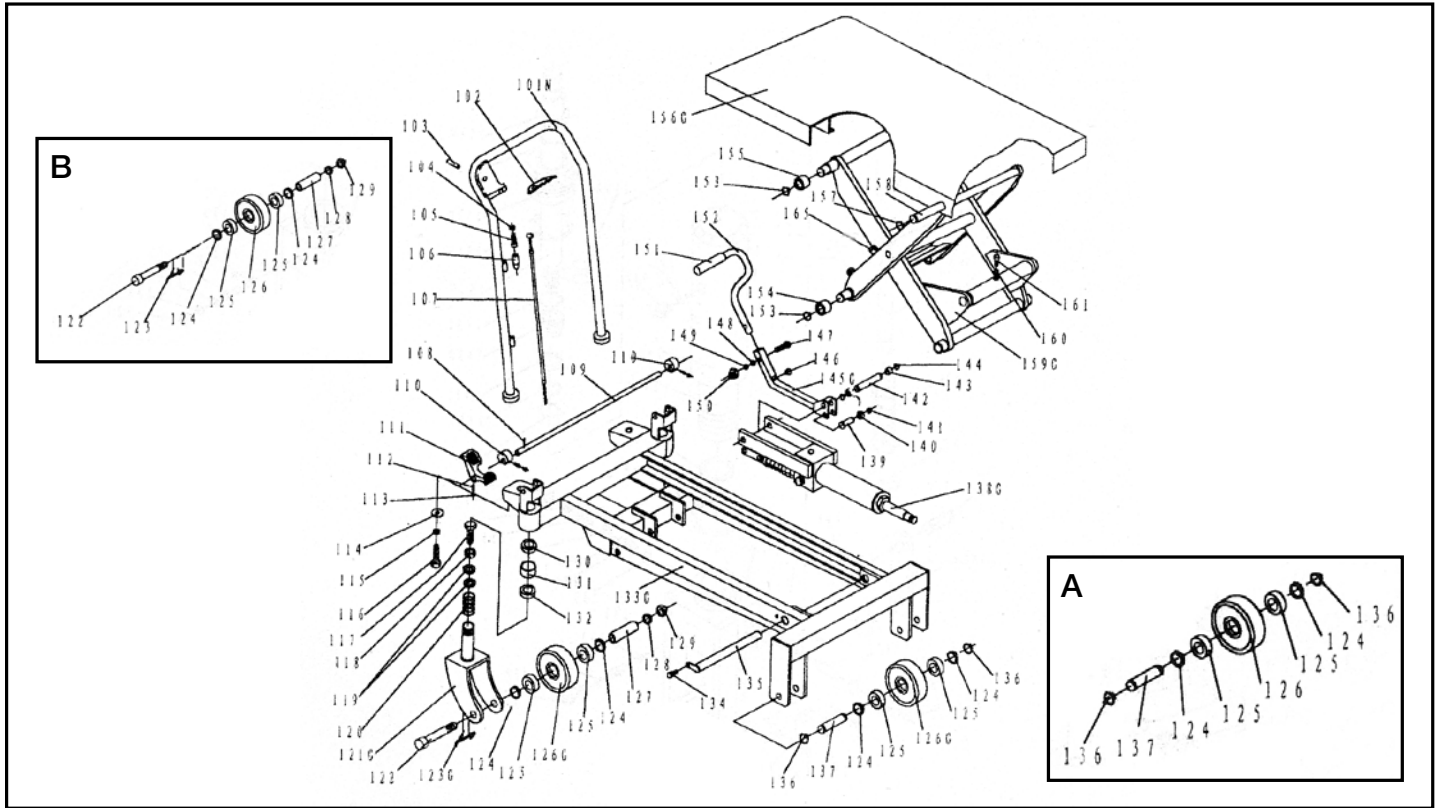
Troubleshooting

If the table does not lift when pressing lifting pedal several times:

- Adjust the control valve located on the hydraulic cylinder (A) by releasing the set screw and locking nut (B) using a flat screwdriver and a 14mm wrench.
- Test the control lever and lifting pedal.



LIFT TABLE PARTS LIST

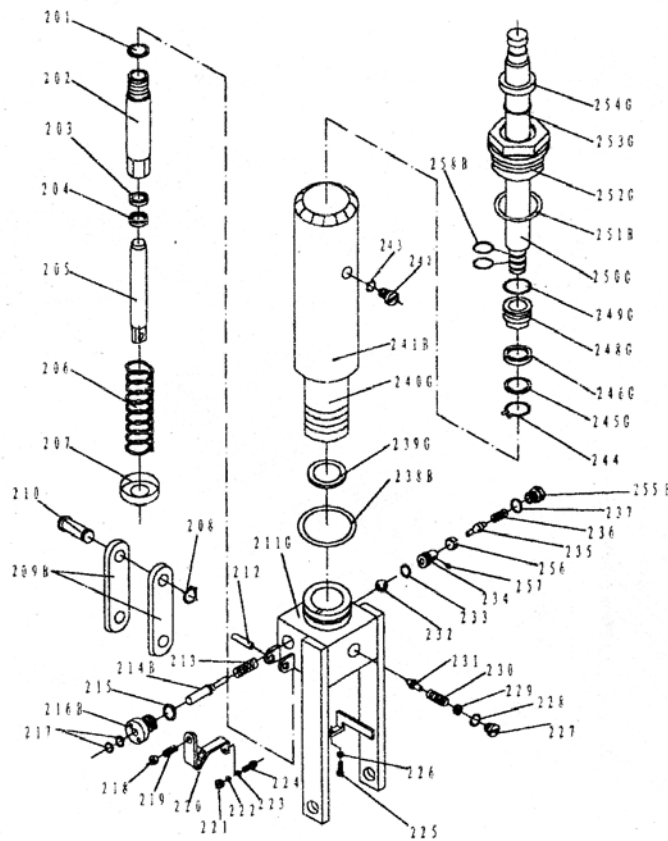


Part No.	Order No.	Description	Qty
101M	MK340	Handle Grip	1
102	MK341	Control Handle	1
103	MK342	Elastic Pin	1
104	MK343	Nut	1
105	MK344	Bolt with Hole	1
106	MK345	Jacket	1
107	MK223	Pull Rod	1
108	MK347	Elastic Pin	1
109	MK348	Shaft	1
110	MK349	Cam	2
111	MK350	Pedal	1
112	MK351	Screw	3
113	MK352	Nut	3
114	MK353	Big Washer	2
115	MK354	Elastic Washer	2
116	MK355	Bolt	2
117	MK356	Bolt	2
118	MK357	Nut	2
119	MK358	Round Nut	4
120	MK359	Spring	2
121	MK360	Seat of Wheel	2
122	MK361	Bolt	2

Part No.	Order No.	Description	Qty
123G	MK362	Brake	2
124	MK363	Washer	4
125	MK364	Bearing	8
126G	MK365	Wheel	4
127	MK366	Axle	2
128	MK367	Elastic Washer	2
129	MK368	Nut	2
130	MK369	Bearing	2
131	MK370	Washer	2
132	MK371	Bearing	2
133	MK372	Frame	1
134	MK373	Bolt	1
135	MK374	Shaft	1
136	MK375	Retaining Ring	4
137	MK376	Axle of Wheel	2
138G	MK377	Pump Unit	1
139	MK378	Pin	1
140	MK379	Roller	1
141	MK380	Retaining Ring	1
142	MK381	Pin	1
143	MK382	Washer	2
144	MK383	Retaining Ring	2

Part No.	Order No.	Description	Qty
145G	MK384	Connecting Rod	1
146	MK385	Cushion	1
147	MK386	Bolt	1
148	MK387	Washer	1
149	MK388	Elastic Washer	1
150	MK389	Nut	1
151	MK390	Protection Cover	1
152	MK391	Pedal Bar	1
153	MK392	Retaining Ring	4
154	MK393	Roller	2
156G	MK394	Table	1
157	MK395	Retaining Ring	2
158	MK396	Shaft	2
159G	MK397	Fork Arm	1
160	MK398	Elastic Washer	1
161	MK399	Screw	1
155	MK401	Roller	2
165	MK404	Elastic Pin	2
A	MO445	Front Wheel Assembly	2
B	MO444	Steer Wheel Assembly	2

HYDRAULIC CYLINDER PARTS LIST



Part No.	Order No.	Description	Qty.	Part No.	Order No.	Description	Qty.	Part No.	Order No.	Description	Qty.
201	MK405	Seal Washer	1	220	MK424	Lever Plate	1	239G	MK443	Seal Washer	1
202	MK406	Pump Cylinder	1	221	MK425	Nut	1	240G	MK444	Cylinder	1
203	MJ701	Dust Ring	1	222	MK426	Elastic Washer	1	241B	MK445	Housing	1
204	MJ702	Y-Seal	1	223	MK427	Washer	1	242	MK446	Bolt	1
205	MK409	Pump Piston	1	224	MK428	Bolt with Hole	1	243	MK447	Seal Washer	1
206	MK410	Spring	1	225	MK429	Bolt with Hole	1	244	MK448	Retaining Ring	1
207	MK411	Spring Cap	1	226	MK430	Nut	1	245G	MK449	Washer	1
208	MK412	Retaining Ring	1	227	MK431	Plug	1	246G	MK450	Y-Seal	1
209B	MK413	Joint Plate	2	228	MJ726	O-Ring	1	248G	MK451	Piston	1
210	MK414	Pin	1	229	MK433	Adjusting Bolt	1	249G	MK452	O-Ring	1
211G	MK415	Pump Body	1	230	MK434	Spring	1	250G	MK453	Piston Rod	1
212	MK416	Elastic Pin	1	231	MK435	Spindle of Safety Valve	1	251B	MK332	Seal Washer	1
213	MK417	Spring	1	232	MK436	Steel Ball	1	252G	MK455	Cylinder Cap	1
214B	MK418	Strike Pin	1	233	MJ731	O-Ring	1	253G	MK456	O-Ring	1
215	MJ713	Seal Washer	1	234	MK438	Seat of Pumping Valve	1	254G	MK457	Dust Ring	1
216B	MK420	Axle Sleeve	1	235	MK439	Spindle of Pumping Valve	1	255B	MK458	Plug	1
217	MJ715	O-Ring	2	236	MK440	Spring	1	256	MK459	Liquid Throttle Sheath	1
218	MK422	Nut	1	237	MK441	Seal Washer	1	257	MK460	Screw	1
219	MK423	Screw	1	238	MK319	O-Ring	1	258	MJ747	O-Ring	2